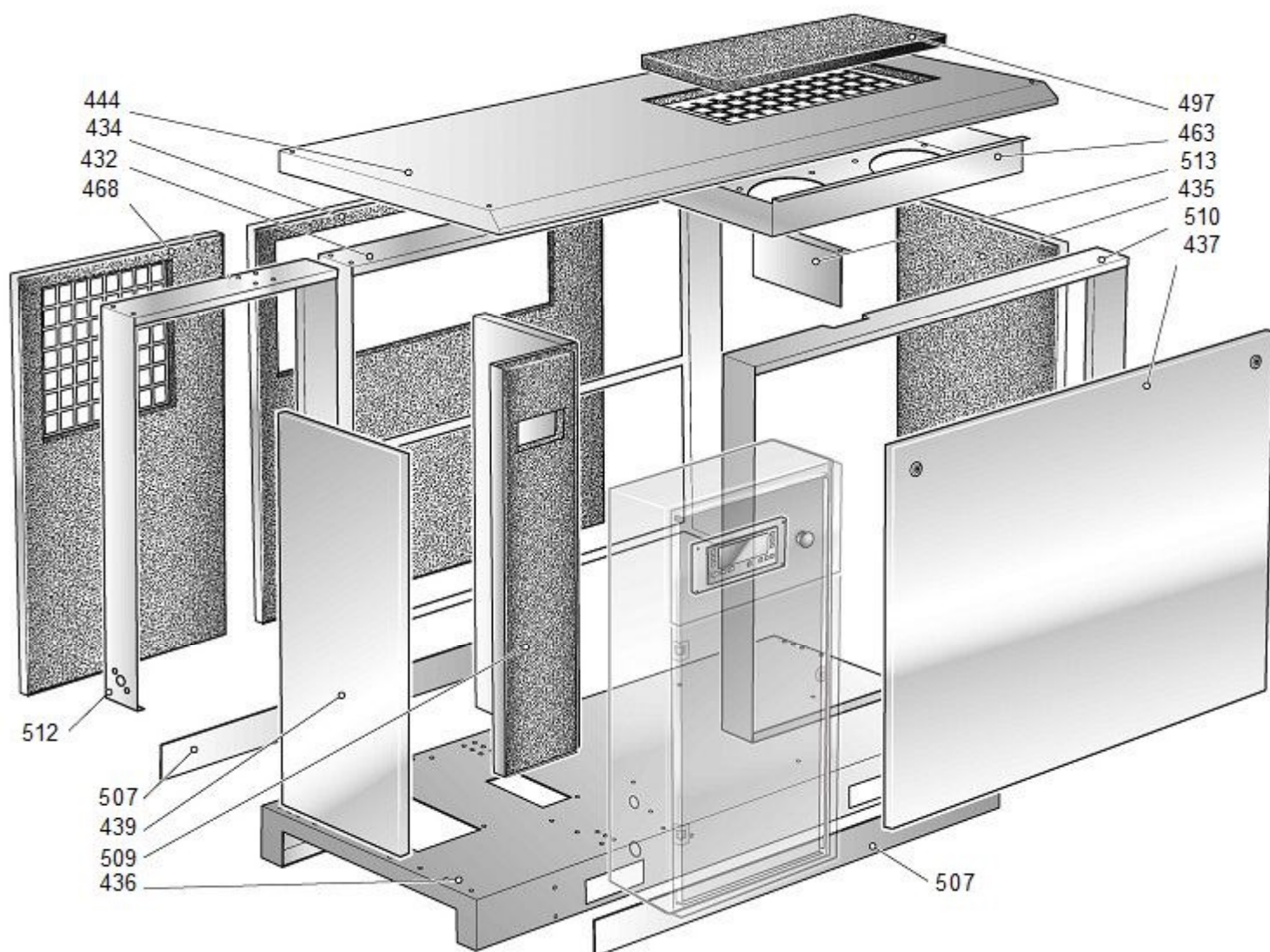




V83SY97N2N544

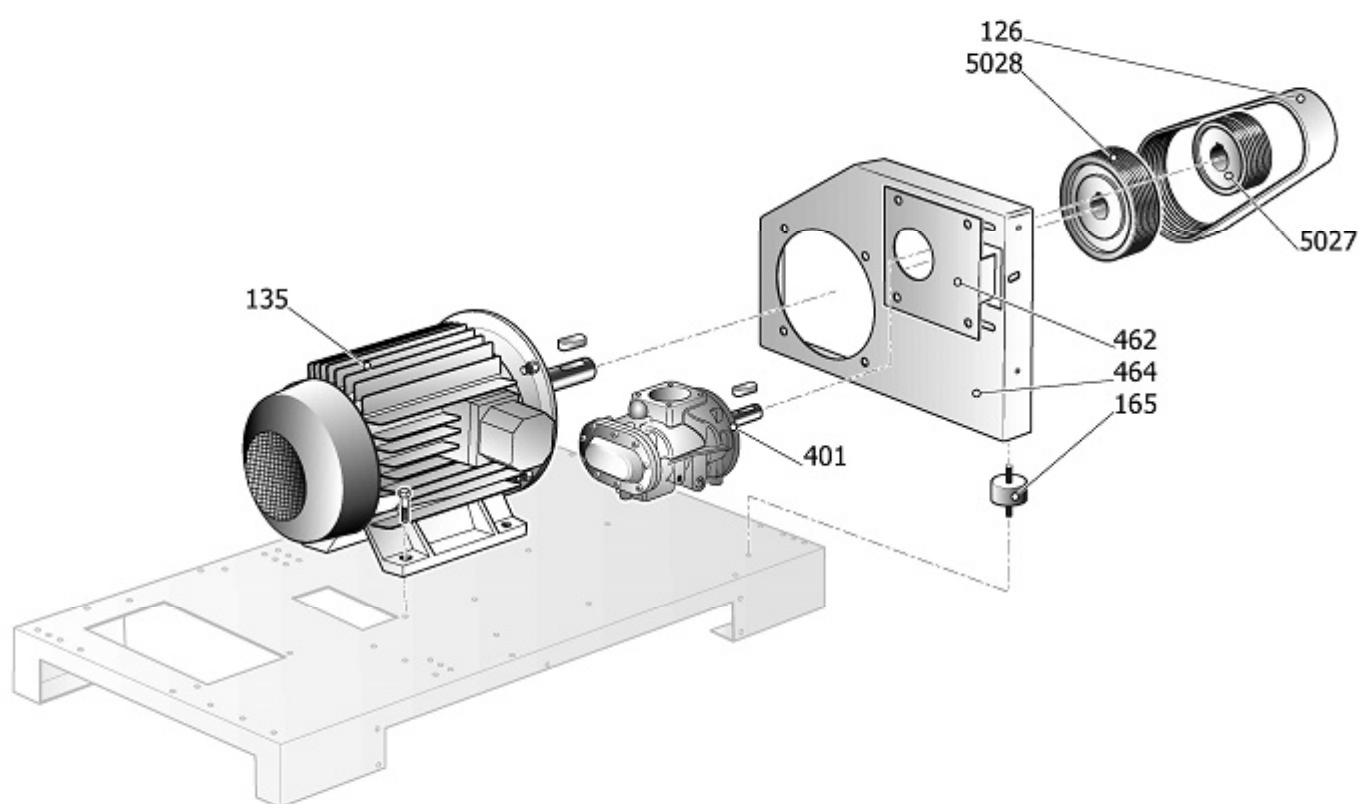
STAR 22-10-500 ES VS (IE3)

Pos	Component		MU	Multiplier
164	4101290	EMPALME L MF R3/8	PZ	1,0
400		CABINA COMPLETA		
405		COMPONENTES DE ARRASTRE		
425		TANK COMPONENT		
450		COMPONENTES DE COMPRESORES		
600	#460SY0550V44	CABINA ELECTRICA	PZ	1,0
1000		LONG LIFE KIT LIST		

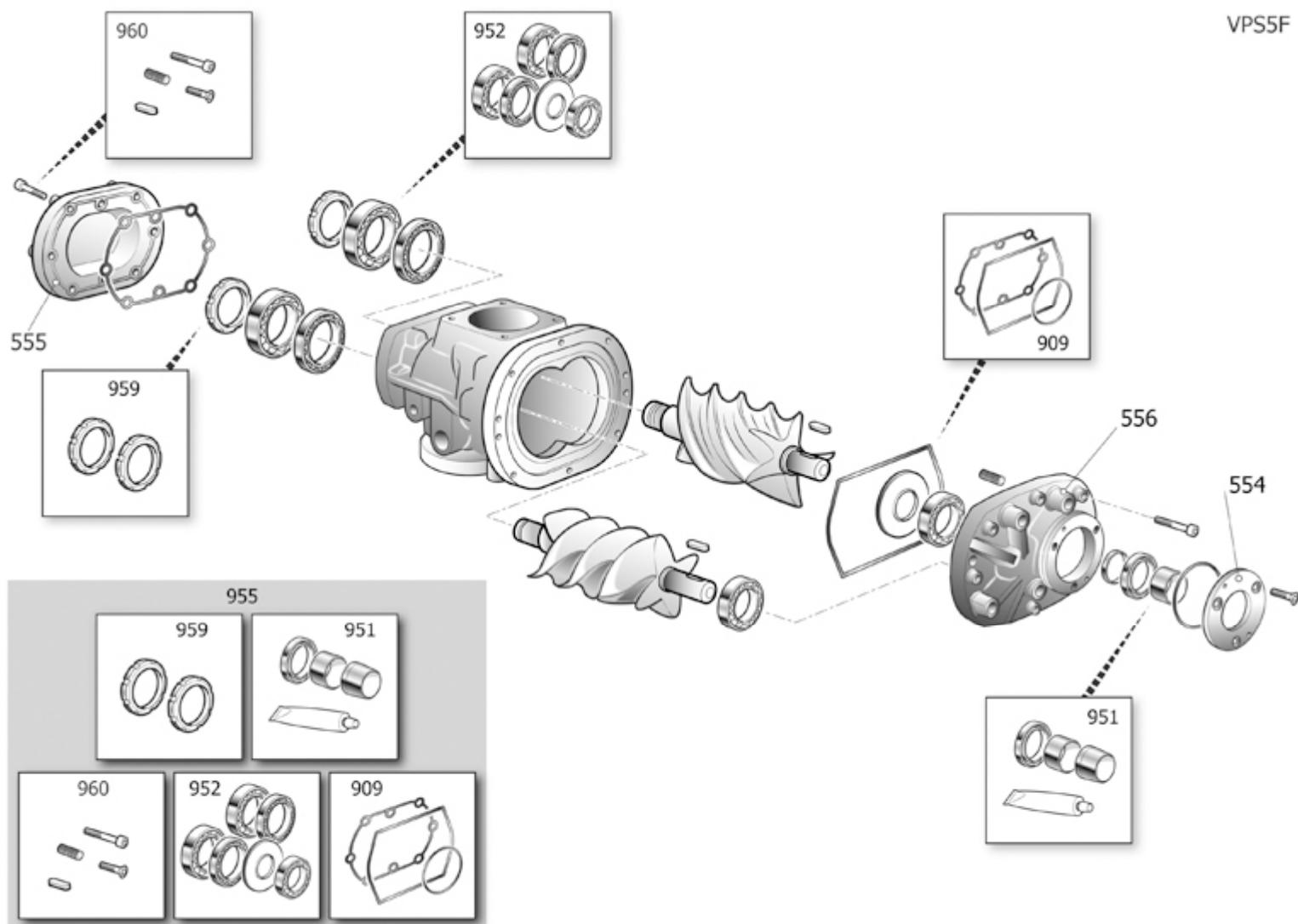


Pos	Component	MU	Multiplier
432	#_260SY0001V44	SOPORTE RADIADOR	PZ 1,0
434	#_260SY0010V44	PANEL TRASERO	PZ 1,0
435	#_260SY0024V44	PANEL TRASERO DER.	PZ 1,0
436	#_160SY0064V44	BASE	PZ 1,0
437	#_260SY0061V64	PORTILLO DELANTERO	PZ 1,0
439	#_160SY0018V44	PANEL TRASERO IZQ.	PZ 1,0
444	#_260SU0001V44	PANEL SUPERIOR	PZ 1,0
463	#160SY0007V	PROTECCION VENTILADOR	PZ 1,0
468	#_260SY0012V44	DRYER PANEL	PZ 1,0
497	#160QQ0094	PREFILTRO	PZ 1,0
507	#160SY0060V44	CHAPA EMPALME	PZ 2,0
509	#_260SY0062V44	INS.PARATIA SEP.VISION22 7016B	PZ 1,0
510	#_260SY0065V44	INS.TELAIO FRON.KELVIN 22 7016	PZ 1,0
512	#_160SY0017V44	TELAIO VANO ES.STAR25 7016B	PZ 1,0
513	#_160SY0048V44	PARATIA SEP.VENT.STAR25 7016B	PZ 1,0

TSVR1



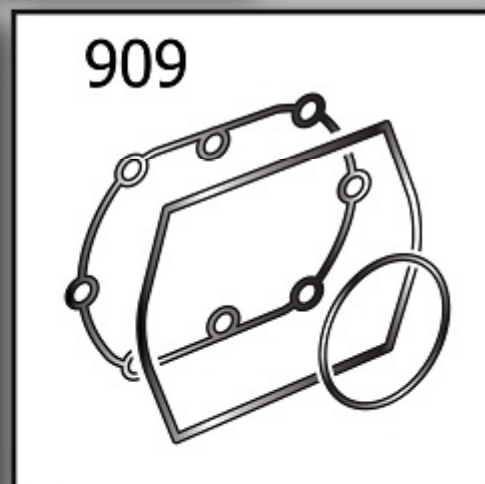
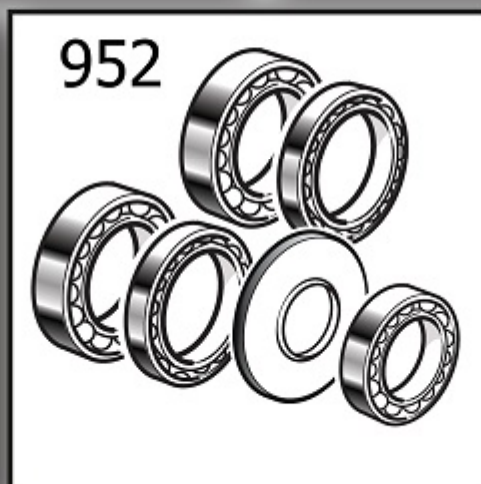
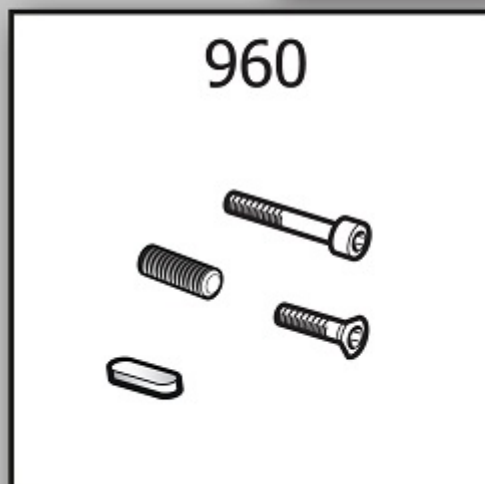
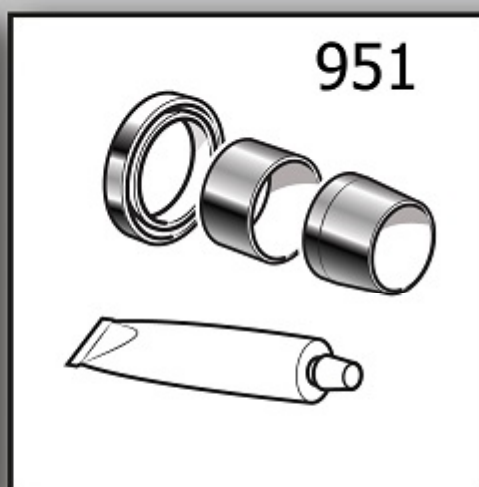
Pos	Component		MU	Multiplier
126	#045217000	CORREA POLY V	PZ	1,0
135	#540Q045622E3	MOTOR	PZ	1,0
165	#020194010	ANTIVIBR.D60X45 MM10X46 60SH	PZ	5,0
401	#5304000110	GRUPO TORNILLO	PZ	1,0
462	#160SY0026V44	PLACA TORNILLO-MOTOR	PZ	1,0
464	#160SY0027V44	PLACA TORNILLO	PZ	1,0
5027	#140439004	PULEGGIA 180-L8-38+BC2517	PZ	1,0
5028	#140442004	PULEGGIA 212-L8-42+BC2517	PZ	1,0



Pos	Component		MU	Multiplier
554	#130400013	SOPORTE ANILLO DE ESTANQUEIDAD	PZ	1,0
555	#130400003	TAPA TRASERA	PZ	1,0
556	#130400015	CAMPANA	PZ	1,0
955	#230400201	KIT REVISIONE GRUPPO VITE	PZ	1,0

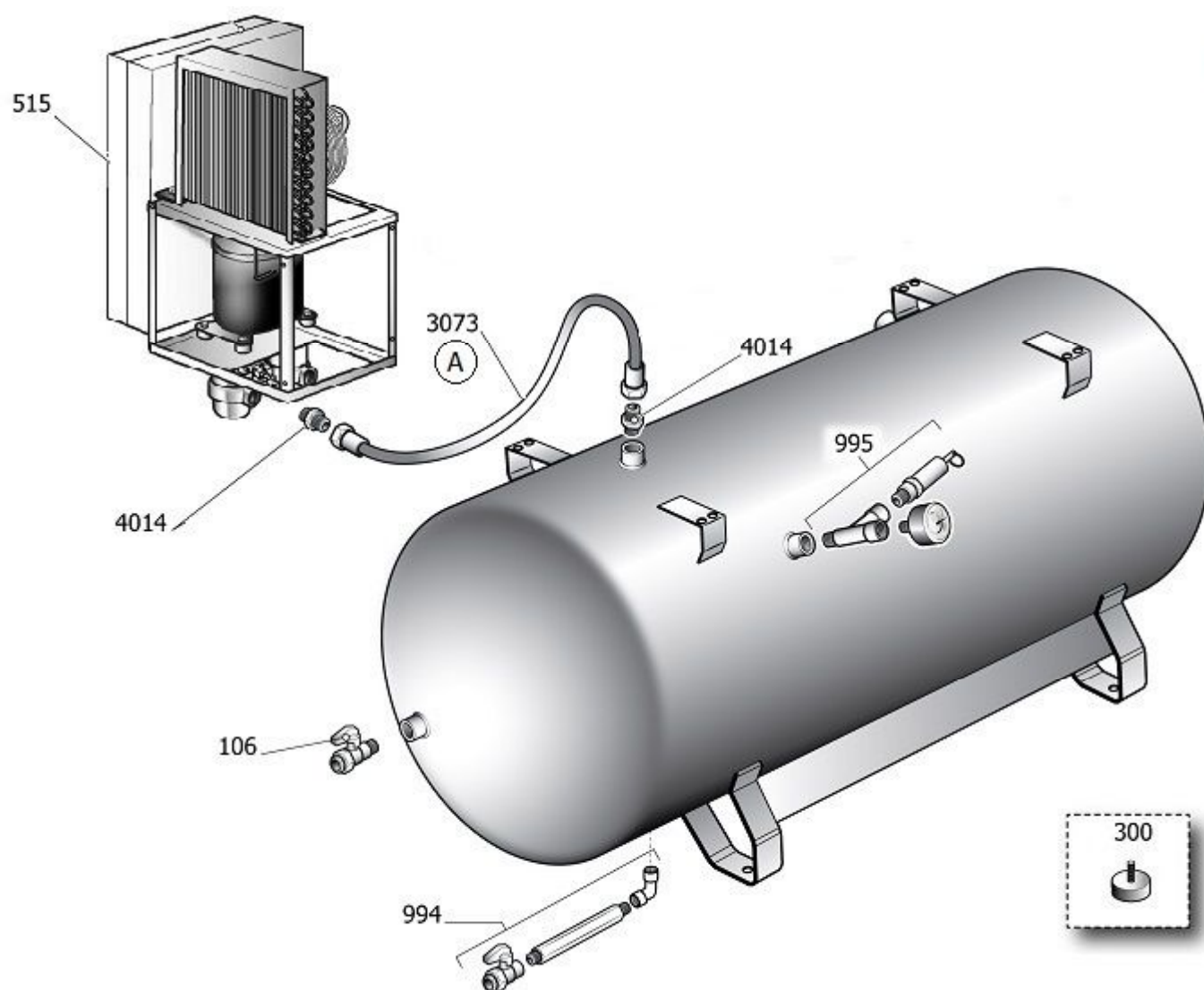


955



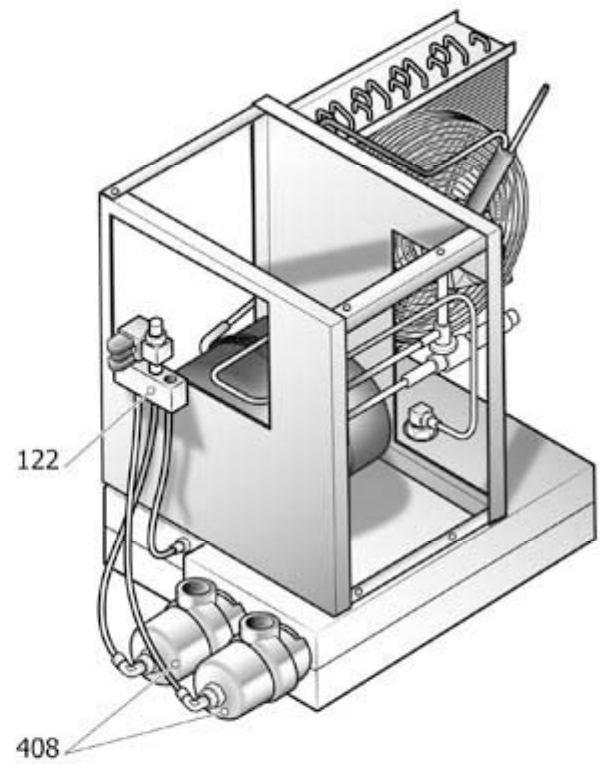
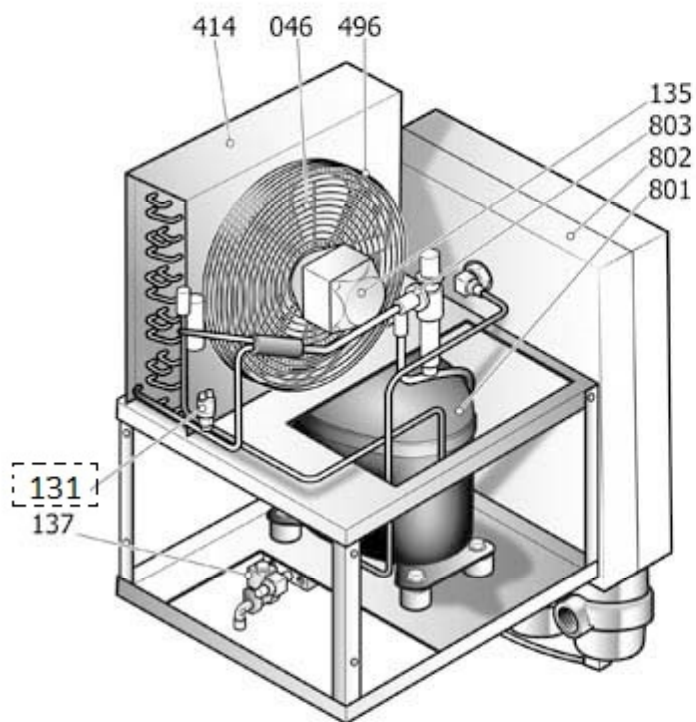
Pos	Component		MU	Multiplier
909	#230400250	KIT GUARNIZ. FS50TF/TFC/TM/TMC	PZ	1,0
951	#230400241	KIT JUNTA ESTANCA	PZ	1,0
952	#230400230	KIT COJINETES	PZ	1,0
959	#230400210	KIT GHIERE	PZ	1,0
960	#230400220	KIT VITERIA	PZ	1,0

LSRR5



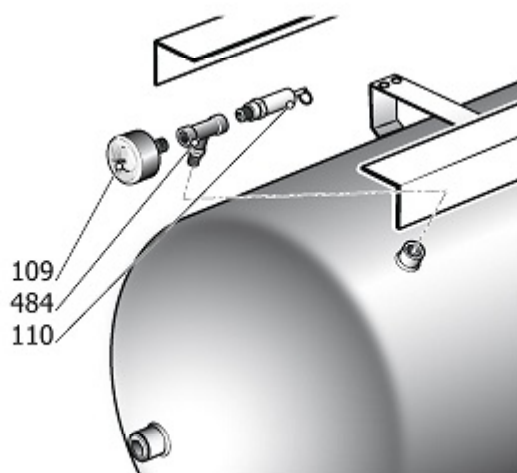
## TANK COMPONENT

Pos	Component		MU	Multiplier
106	#322031000	GRIFO DE LINEA	PZ	1,0
300	41K0174	KIT RUEDAS/PIES	PZ	1,0
515	#048516100	SECANTE	PZ	1,0
994	9421512	KIT DESCARGA CONDENSACION	PZ	1,0
995	9421786	KIT MN+VS 11B S_500 STAR-VEGA	PZ	1,0
3073	#160SY0035	TUBO FLX 3/4 BSP FD+F45 L550	PZ	1,0
4014	#011000416	RACC.ADT.MM 3/4" OR-BSP	PZ	2,0



Pos	Component	MU	Multiplier
46	#048520007 VENTILADOR	PZ	1,0
122	#048519017 VALVULA UNIDIRECCIONAL	PZ	1,0
131	#048516014 PRESOSTATO COMPLETO	PZ	1,0
135	#048900000 MOTOR	PZ	1,0
137	#048516001 ELECTROVALVULA	PZ	1,0
408	#048516009 CARTUCCIA PFC ES STAR DRY 30	PZ	1,0
414	#048516018 RADIADOR AIRE	PZ	1,0
496	#048516017 REJILLA VENTILADOR	PZ	1,0
601	#048519015 Sonda TEMPERATURA	PZ	1,0
801	#048516016 COMPRESOR PARA SECANTE	PZ	1,0
802	#048516006 ALU-DRY MODULE	PZ	1,0
803	#048516007 VALVULA PILOTO	PZ	1,0

KMVSP





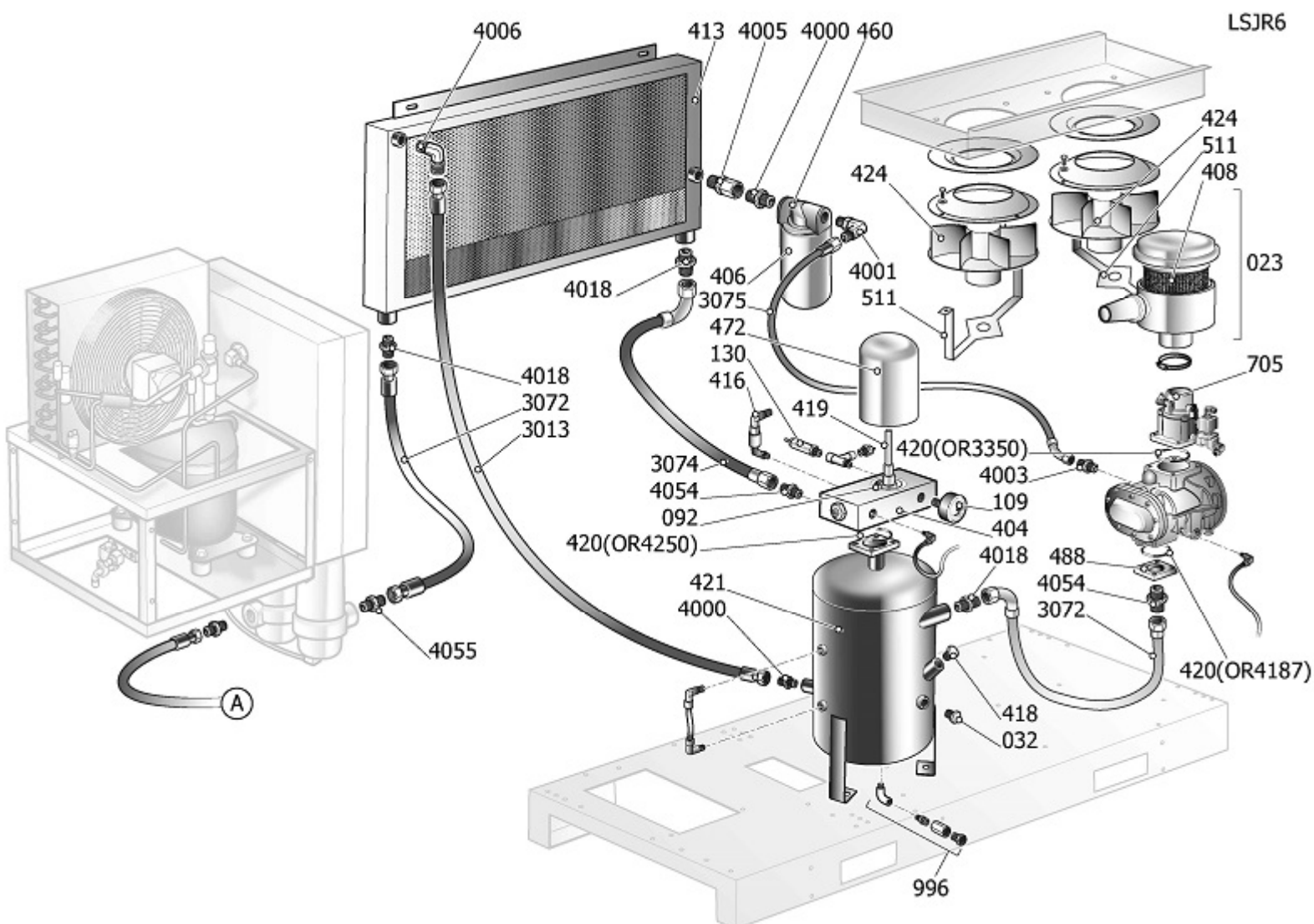
9421786

KIT MN+VS 11B S\_500 STAR-VEGA

Pos	Component		MU	Multiplier
109	#330060100	MANOMETRO	PZ	1,0
110	9049307	VALVULA DE SEGURIDAD	PZ	1,0
484	4101206	UNION EN T R3/8	PZ	1,0



## COMPONENTES DE COMPRESORES



Pos	Component	MU	Multiplier
23	#317101000 GRUPO FILTRO AIRE	PZ	1,0
32	#012088000 INDICADOR ACEITE	PZ	1,0
92	#010082000 JUNTA TAPA	PZ	1,0
109	#330060100 MANOMETRO	PZ	1,0
127	9270019 TUBO RILSAN 4X6 PTFE NEUTRO	MT	0,1
130	9049309 VALVULA DE SEGURIDAD	PZ	1,0
404	#347150000SGL VALVULA PRESION MINIMA	PZ	1,0
406	9054201 FILTRO ACEITE	PZ	1,0
408	#017101000 FILTRO AIRE 8UM D210	PZ	1,0
413	#048523000 RADIADOR AIRE ACEITE	PZ	1,0
416	#012120000 INDICADOR DRENAJE	PZ	1,0
418	#011999008 TAPPO ESAG.M3/4" C/SFIATO+GRN	PZ	1,0
419	\$14402950 RACC.SEP ARIA-OLIO COMP VTDM46	PZ	1,0
420	#010054000 ANILLO OR 4187 VITON	PZ	1,0
420	#010090000 ANILLO OR 4250 VITON	PZ	1,0
421	#160SV0002V41 DEPOSITO SEPARADOR DE ACEITE	PZ	1,0
424	#024118015 ELECTROVENTILADOR	PZ	2,0
460	#160JL0111 CABEZA FILTRO ACEITE	PZ	1,0
472	#048353000 FILTRO SEPARADOR	PZ	1,0
484	4101206 UNION EN T R3/8	PZ	1,0
488	#160ED0073 ABRAZADERA IMPULSION	PZ	1,0
511	#160PU0118V44 STAFFA SUP.VENT.RAD.D280 7016B	PZ	2,0
705	#419260164SGL GR.ASP.30DC-24V C/R (1,7) S/BP	PZ	1,0
996	9421785 KIT RUB.SCARICO DIS.1/2"	PZ	1,0
3013	#151JO0019 TUBO FLX 1/2 BSP 2FD L780	PZ	1,0
3072	#160SY0030 TUBO FLX 1" BSP FD+F90 L598	PZ	2,0
3074	#160SY0032 TUBO FLX 1" BSP FD+F90 L1030	PZ	1,0
3075	#160SY0033 TUBO FLX 1/2 BSP FD+F90 L470	PZ	1,0
4000	#011000415 RACC.ADT.MM 1/2"X3/4" BSP	PZ	2,0
4001	#011000407 RACC.ADT.90°GIR MM1/2"X3/4"+OR	PZ	1,0
4003	#011000417 RACC.ADT.MM 1/2" OR-BSP	PZ	1,0
4005	#011100002 RACC.ADT.MF 1/2" GIR	PZ	1,0
4006	#011000411 RACC.ADT.90°MM 1/2"OR-BSP	PZ	1,0
4018	#011730000 NIPLE 1+OR	PZ	3,0
4054	#011729000 RACC.ADT.MM 1"X1"1/4 OR-BSP	PZ	2,0
4055	#011000405 RACC.ADT.MM 1"X3/4" BSP	PZ	1,0



#419260164SGL

GR.ASP.30DC-24V C/R (1,7) S/BP

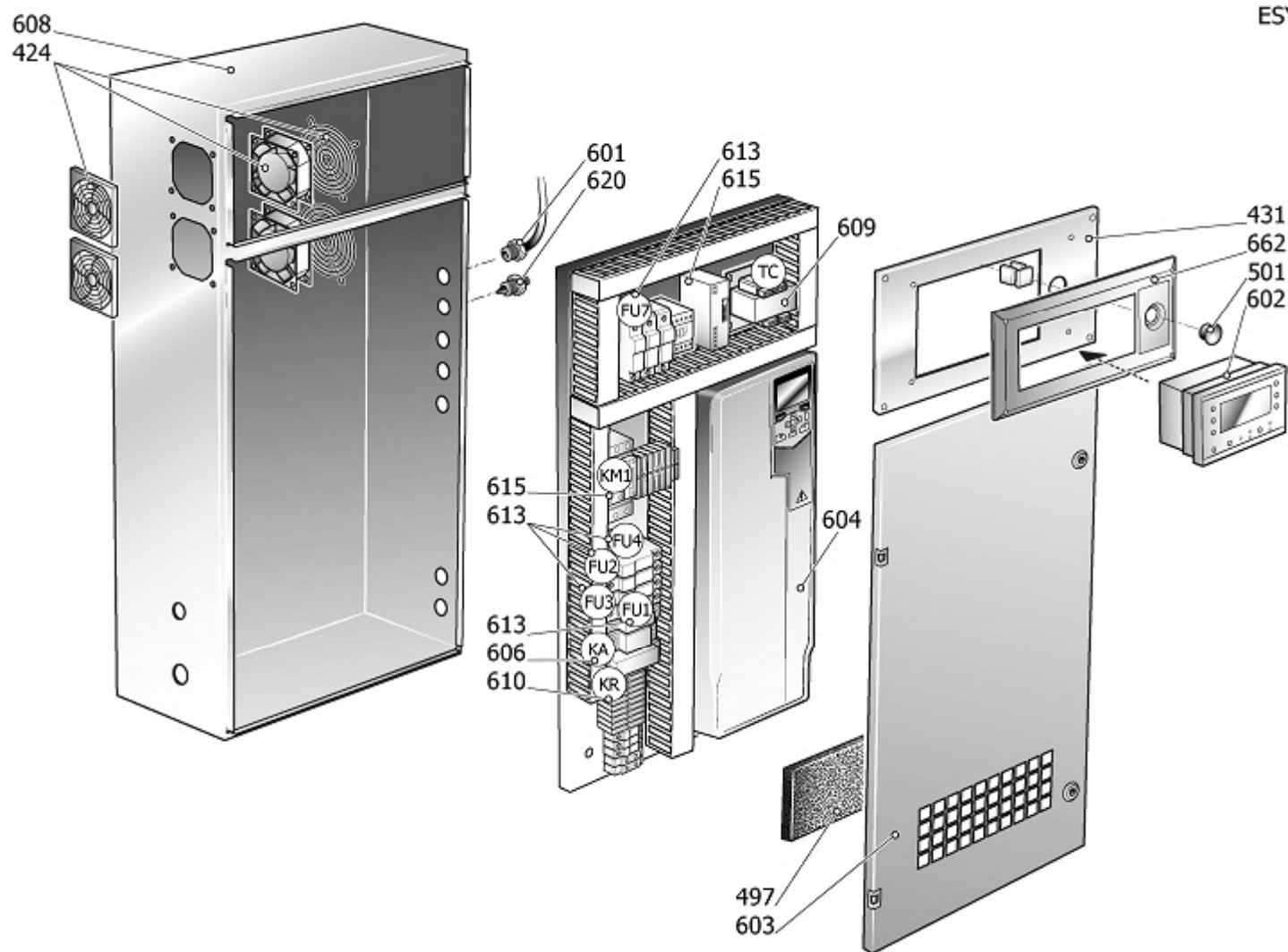
Pos	Component		MU	Multiplier
137	#008195020	ELECTROVALVULA	PZ	1,0
700	#199260001	BASE ASPIRAZIONE IR10/20 DC	PZ	1,0
703	#199260020	FLANGIA FLT ARIA IR30DC D50 NW	PZ	1,0
957	#260260050	KIT VALVULA DE ASPIRACION	PZ	1,0
966	#419261003	KIT MOLLA MARCIA VUOTO IR10-30	PZ	1,0



9421785

KIT RUB.SCARICO DIS.1/2"

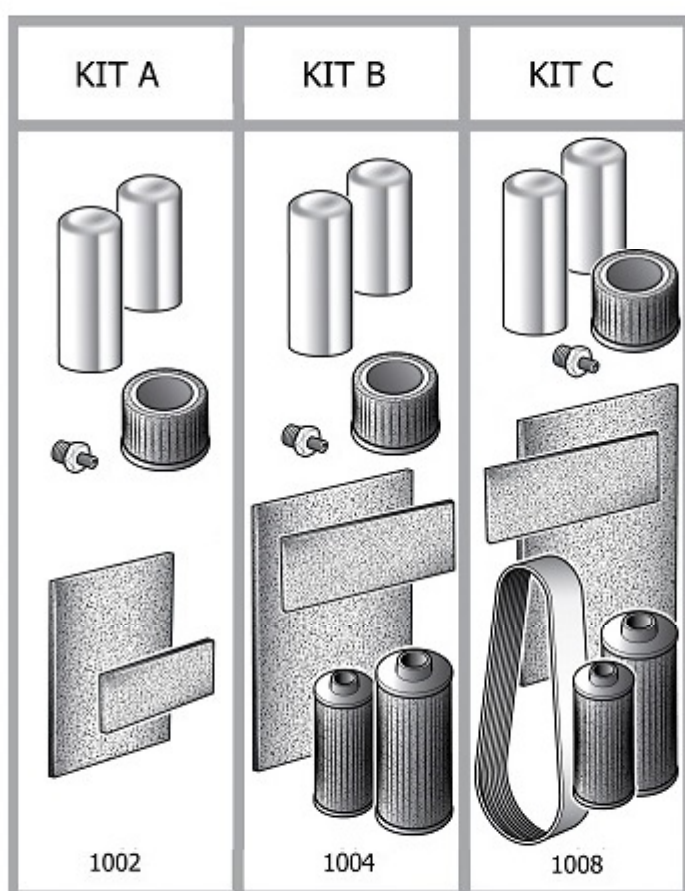
Pos	Component		MU	Multiplier
106	#322056010	GRIFO DE LINEA	PZ	1,0
417	#012077000	TAPON ACEITE	PZ	1,0
4012	#011000409	RACC.ADT.MM 1/2" CON-BSP	PZ	1,0



Pos	Component	MU	Multiplier
176	E0M13C403875	CONECTOR	PZ 1,0
424	#224119000	ELECTROVENTILADOR	PZ 1,0
497	#160SY0055	PREFILTRO	PZ 1,0
501	EOP270KIT216	PULSANTE DE EMERGENCIA	PZ 1,0
601	#008333000	SONDA TEMPERATURA	PZ 1,0
602	#305420000SGL	CONTROLADOR ELECTRONICO	PZ 1,0
603	#260QD0001V44	PORTILLO ASIENTO ELECTRICO	PZ 1,0
604	#305457000	CONVERTIDOR	PZ 1,0
606	#008415000	RELE' RMI A 4-5 024 AC GAV	PZ 1,0
606	E0M044031	RELE' MAG.24VAC 4SC-5A	PZ 1,0
608	#160QD0003V44	ASIENTO ELECTRICO	PZ 1,0
609	E0M14160438	TRANSFORMADOR	PZ 1,0
610	E0M040004	RELE SECUENCIA FASES	PZ 1,0
613	E0M11WEBGG01	FUS.10X38-1A CH10	PZ 2,0
613	E0M11WEBGG02	FUS.10X38-2A CH10	PZ 6,0
613	E0M11WEB152	FUSIBLE	PZ 2,0
613	E0M11WEB50GG	FUS.22X58-50A CH22	PZ 6,0
613	E0M11WEB652F	FUS.5X20-6.3A RP VTR	PZ 2,0
615	E0M013037	CNT.S2 50A 24V 3RT2036-1AC20	PZ 1,0
615	E0M013210	CNT.S00 9A 24V 3RT2016-1AB02	PZ 2,0
620	#008167010	TRANSDUCTOR	PZ 1,0
662	#260QQ0012V44	CONTROL.FRAME ETIV	PZ 1,0



LLK70



## LONG LIFE KIT LIST

Pos	Component		MU	Multiplier
1002	#260KTB88E	LLK A VKV 22-08/10 VS	PZ	1,0
1004	#260KTB60E	LLK B VKV 22 ES DV	PZ	1,0
1008	#260KTE60E	LLK C VKV 22-08/10 VS ES	PZ	1,0